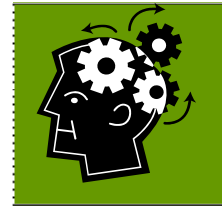


# 10<sup>th</sup> Annual CESA 5 School-Based Speech-Language Pathology Institute

March 5-6, 2012  
Kalahari Resort & Convention Center  
Wisconsin Dells, WI



## Conference Overview

This conference provides speech-language pathologists (SLPs) hands-on, ready-to-replicate strategies and techniques to benefit the students they serve with speech-language disabilities. The conference also provides an opportunity for SLPs to re-connect with the greater community of school-based SLPs and to facilitate a cross-pollination of service delivery ideas.

In 2011, nearly 500 SLPs attended the conference, making it one of the largest speech-language pathologists' events in the state and the nation. We are anticipating 500 participants again in 2012! Please join us to network with your peers and to enjoy the fantastic speakers.

Our keynote speaker will be Michael McSheehan, who is a Clinical Assistant Professor in the Department of Communication Sciences and Disorders and Project Coordinator with the Institute on Disability/ECED at the University of New Hampshire. Other speakers include Alexandra Dunn, M.Cl.Sc. (Speech-Language Pathologist from Ontario), Barbara Williams Hodson, PhD, CCC-SLP (from Wichita State University), and Blaise Winter (motivational speaker).

We plan to have several onsite vendors. Vendors and additional sponsorships provide thousands of dollars in therapy and assessment items and other door prizes. The Kalahari has been an outstanding venue for the conference and continues to honor the state-rate for lodging.

Attendees have the option of attending the conference for 1 graduate credit from Viterbo University (additional \$200 for tuition and fees). For SLPs needing ASHA Certification Maintenance Hours (CMHs), this conference provides 11 hours of direct instruction.



**For more information, please visit us at**

**<https://sites.google.com/a/cesa5.org/slpinstitute/>**

Questions: Please contact Andrea Schneiter,  
Conference Coordinator, [schneitera@cesa5.org](mailto:schneitera@cesa5.org)  
608-742-8814 or 800-862-3725, ext 293